

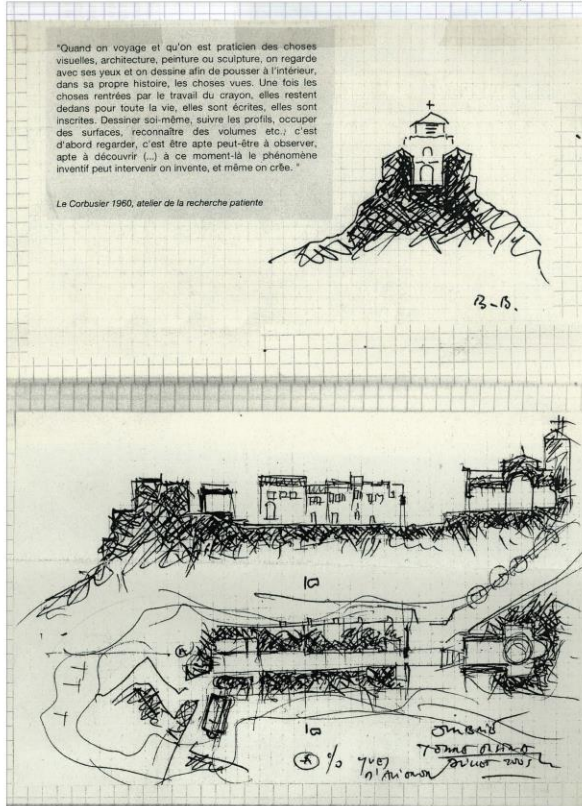


LA MAISON DE L'ECRITURE

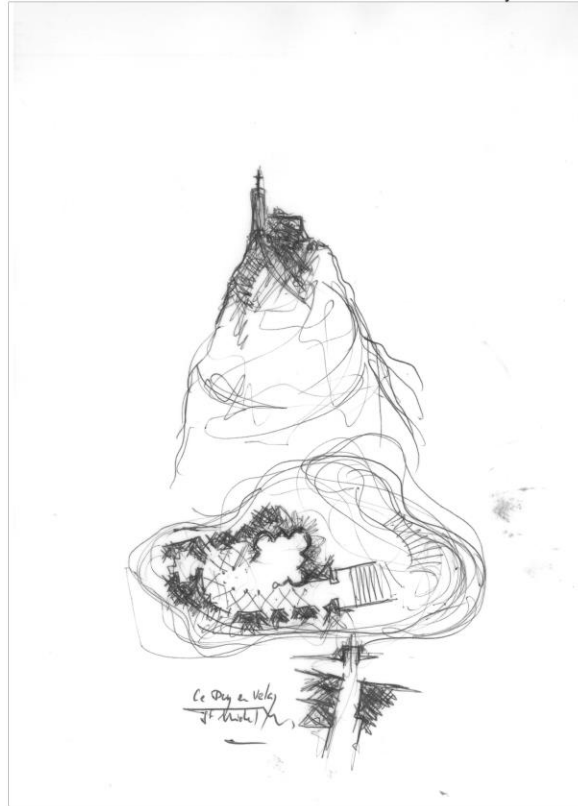
FONDATION JAN MICHALSKI POUR L'ECRITURE ET LA LITTERATURE

CLUB 44, LE 17 OCTOBRE 2013

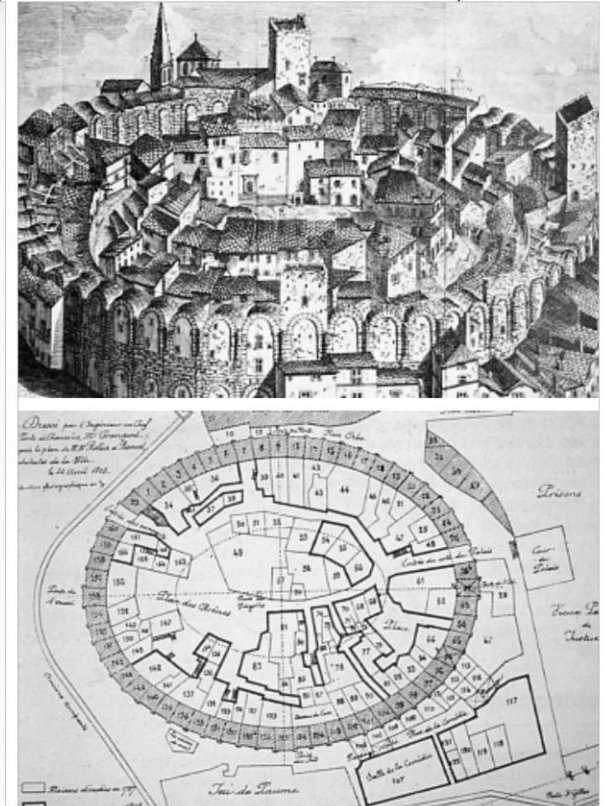
Torre Orsina, Umbria



Le Puy-en-Velay

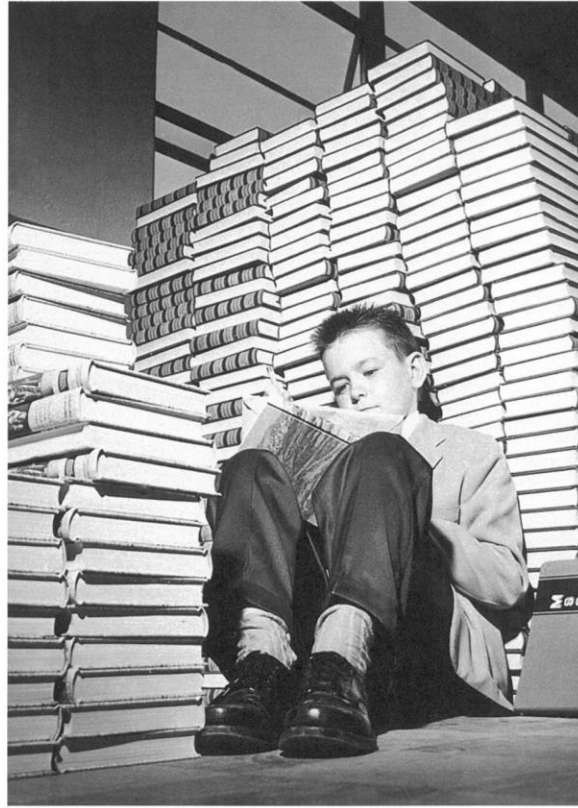


amphithéâtre d'Arles

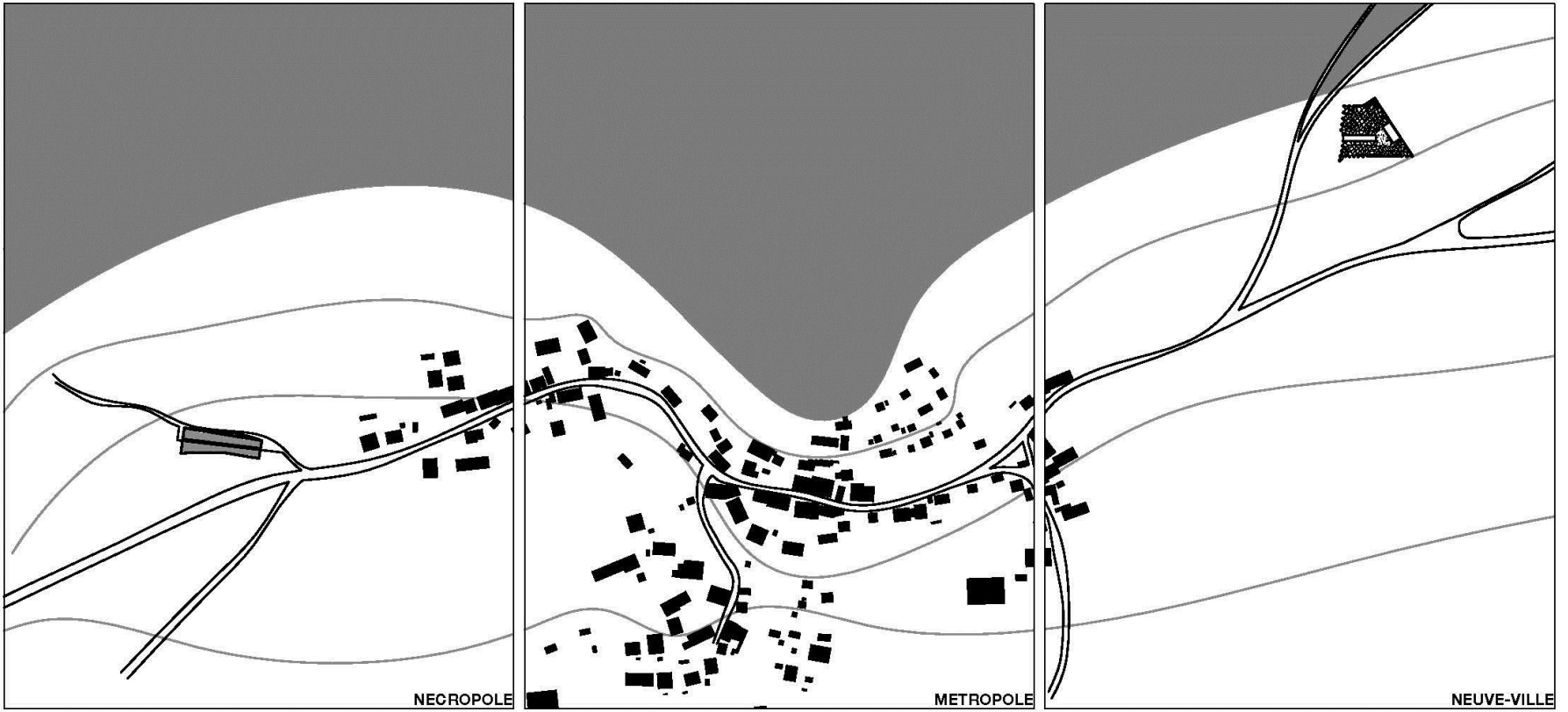


THEME, TERRITOIRE, CONCEPT

Friedrich Glauser



THEME



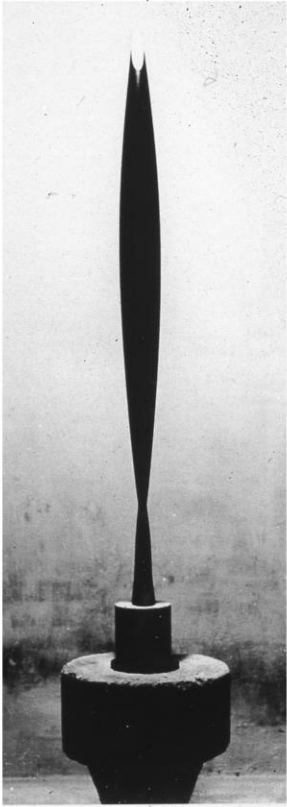
NECROPOLE

METROPOLE

NEUVE-VILLE

TERRITOIRE

Oiseau dans l'espace de Brancusi



(A) maison ne s'élève pas
 B. et 7/12/08 h. sur le terrain
 LA SYNTHESE

> les bâtiments existants

> les poteaux
 + la poutre centrale de soutien

> la salle haute

> le noyau de verre photo voltaïque

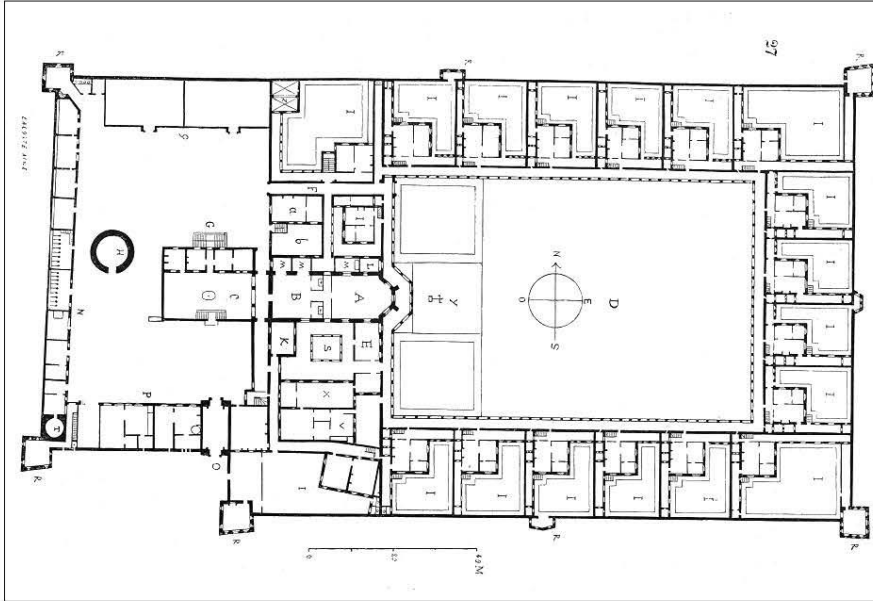
8/12/08 h.

Cours d'arboriculture, 1920 Berne

Cours d'arboriculture à Bislen, 1920 Berne
 Fritz Frankhauser (1866-1940)
 Schweizerische Landesmuseum und Cramer Verlag 74
 février 2010 h.

CONCEPT

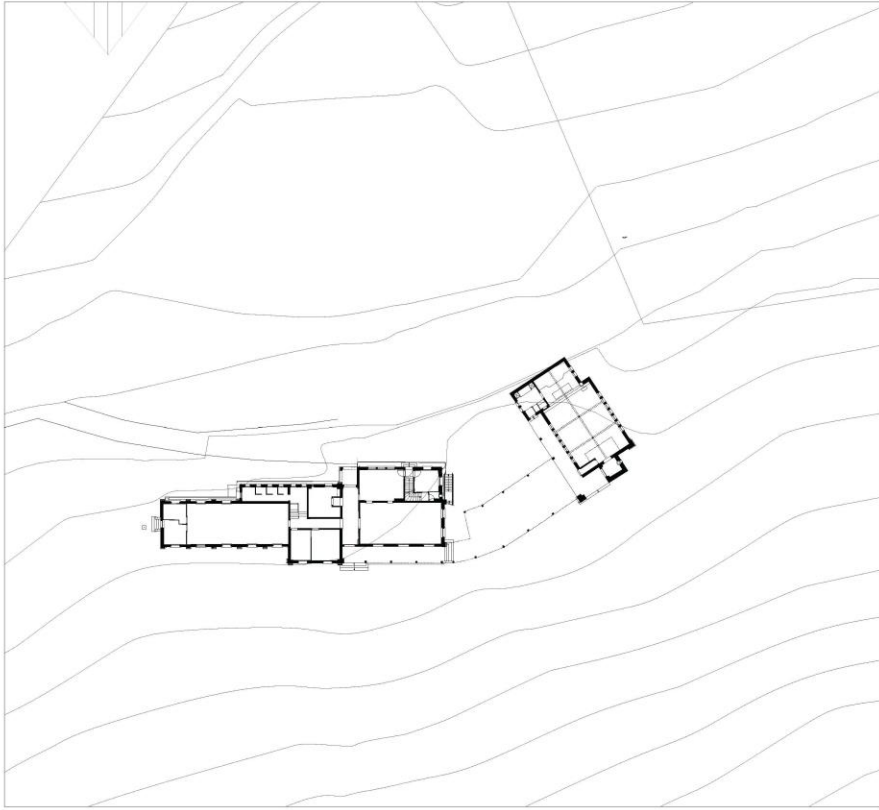
chartreuse de Clermont



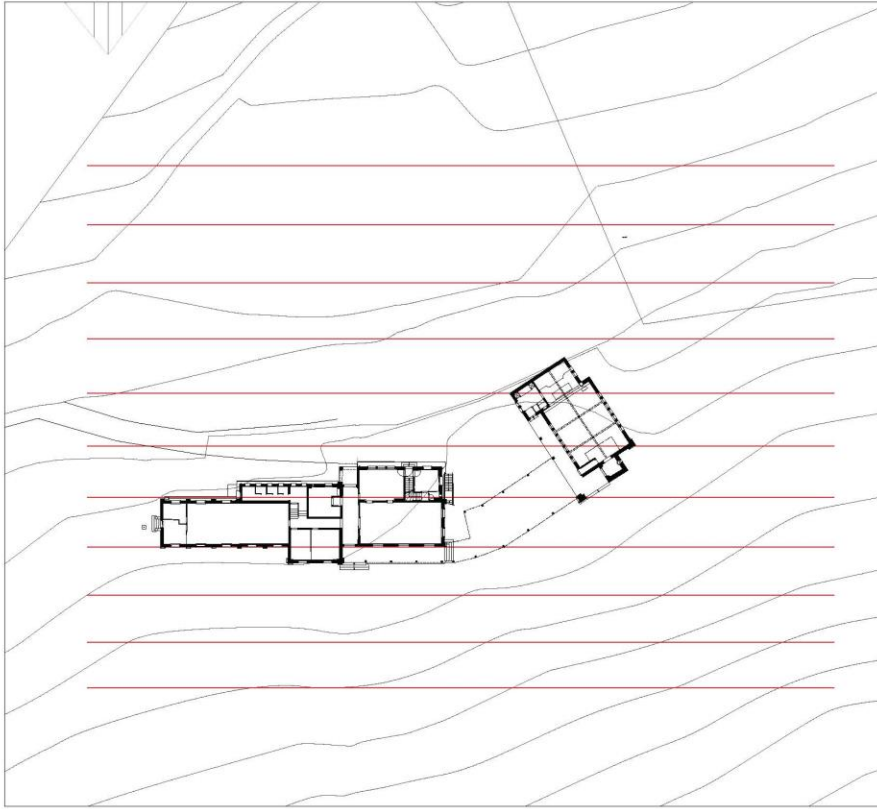
chartreuse



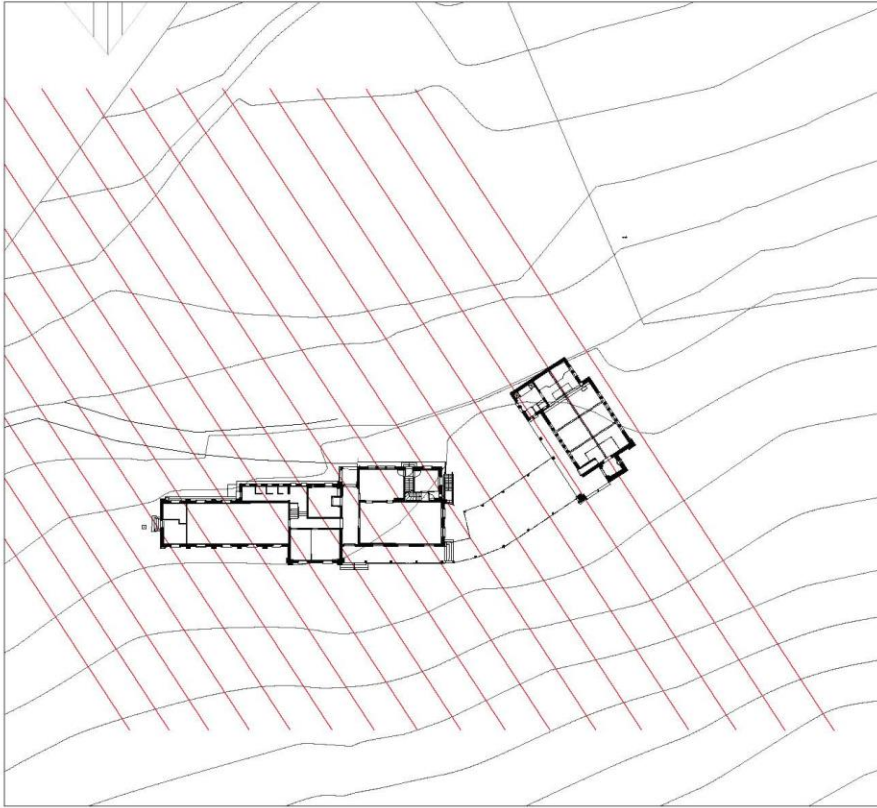
"LA MAISON EST UNE VILLE, LA VILLE EST UNE MAISON"
Léon Battista Alberti (1404-1472)



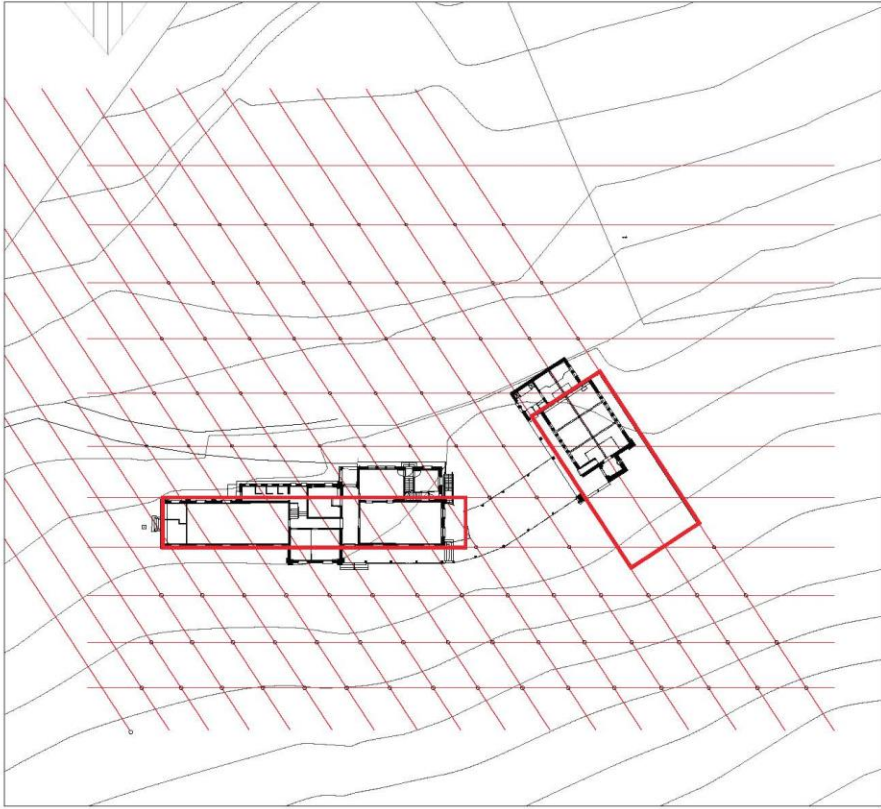
LA COLONIE DE VACANCES



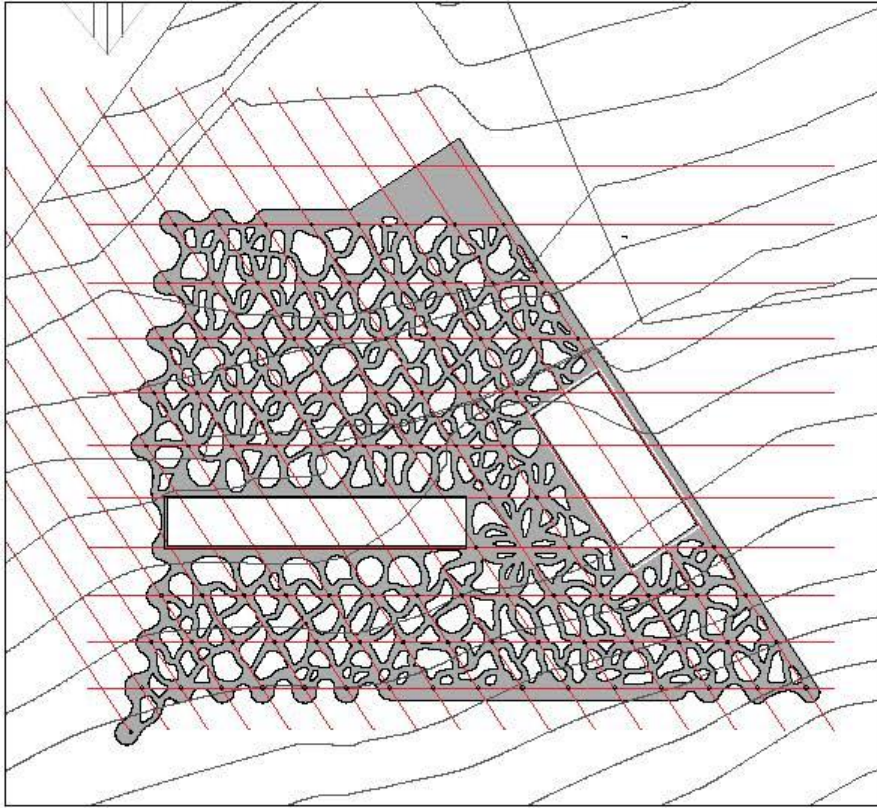
TRAME PARALLELE AU TERRITOIRE



TRAME PERPENDICULAIRE AU TERRITOIRE

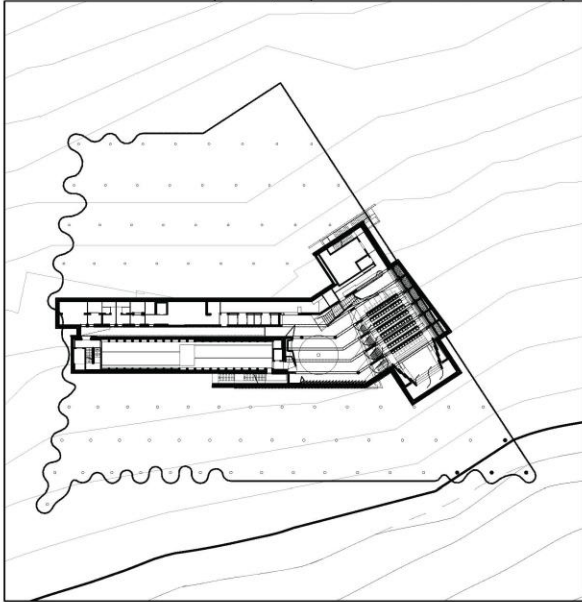


LES 2 TRAMES LES 2 BOITES

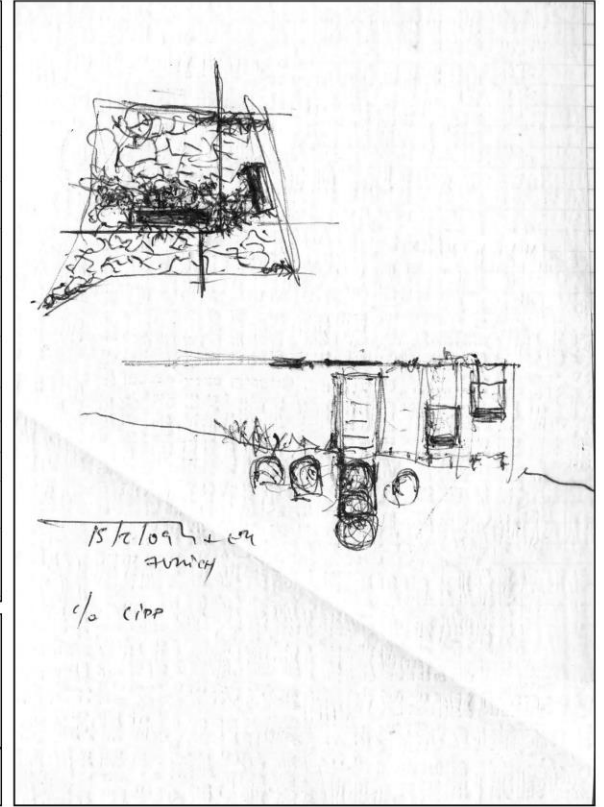
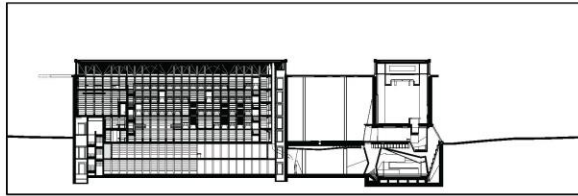
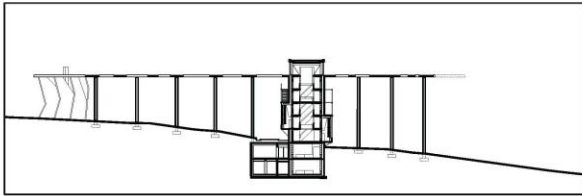
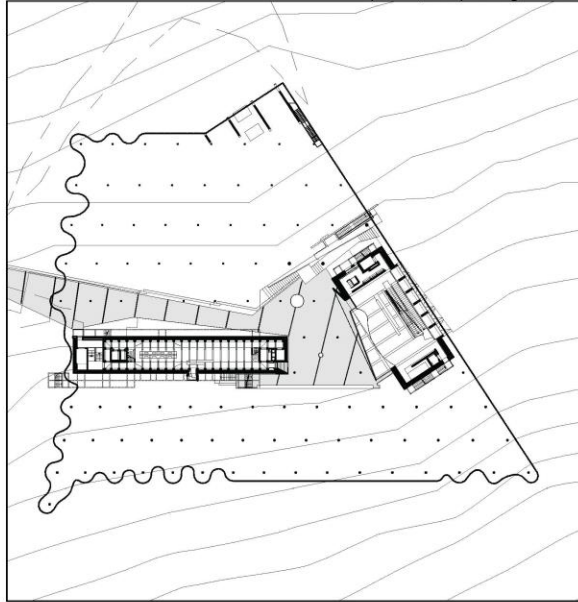


L'ESPACE DE LA VILLE

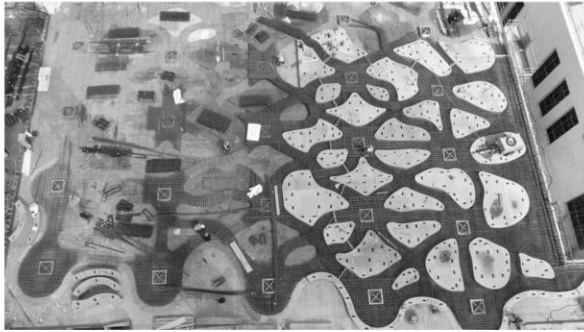
plan -2, coupe transversale sur la bibliothèque



plan 0, coupe longitudinale



LA MAISON DE L'ECRITURE

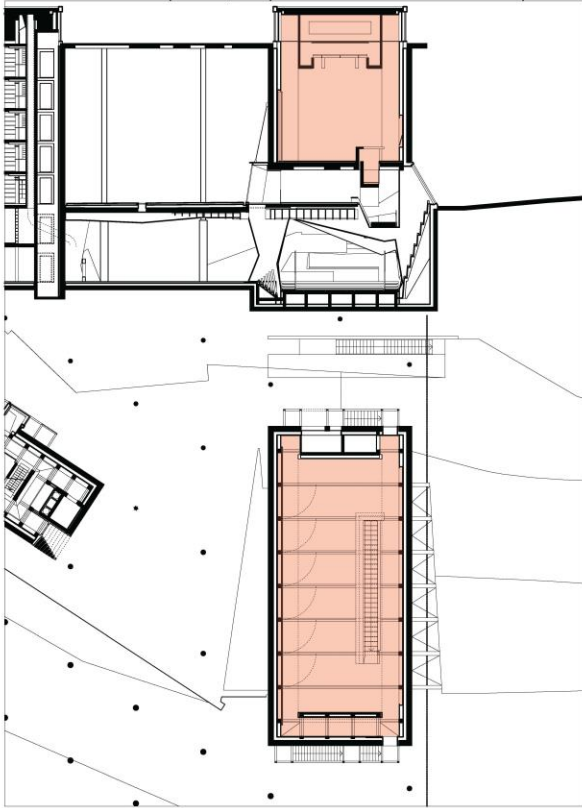


CANOPEE



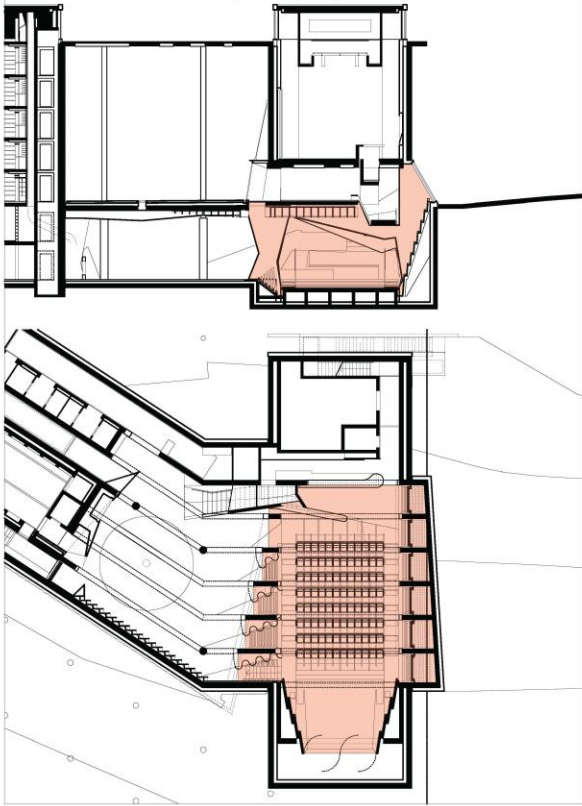
PIAZZETTA

plan +2, coupe transversale sur la salle d'exposition



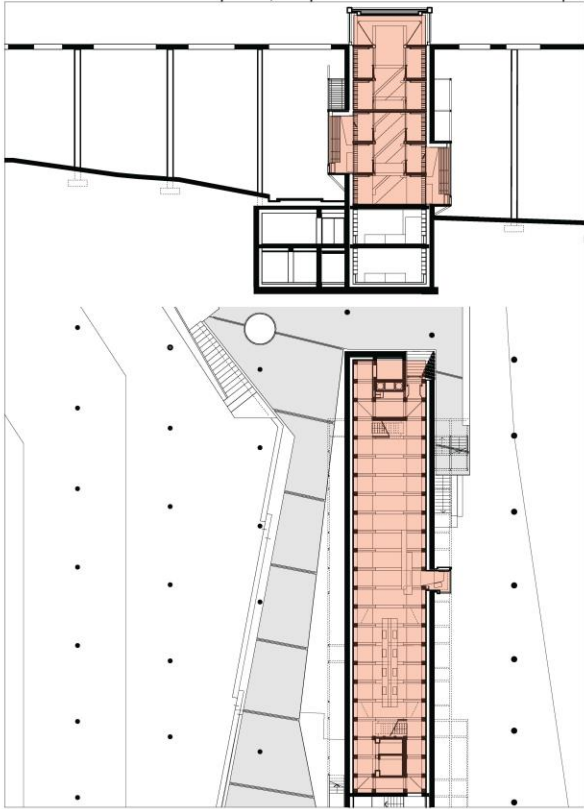
SALLE D'EXPOSITION

plan -2, coupe transversale sur l'auditorium



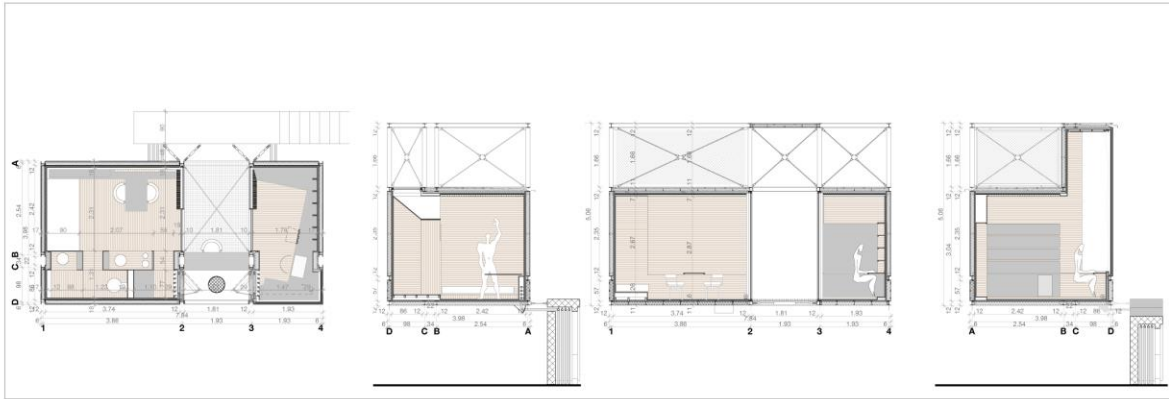
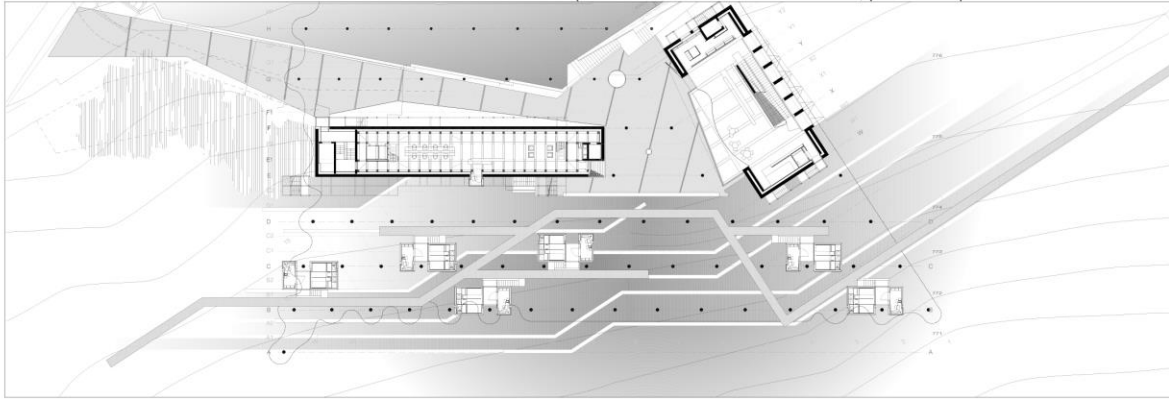
AUDITORIUM

plan 0, coupe transversale sur la bibliothèque

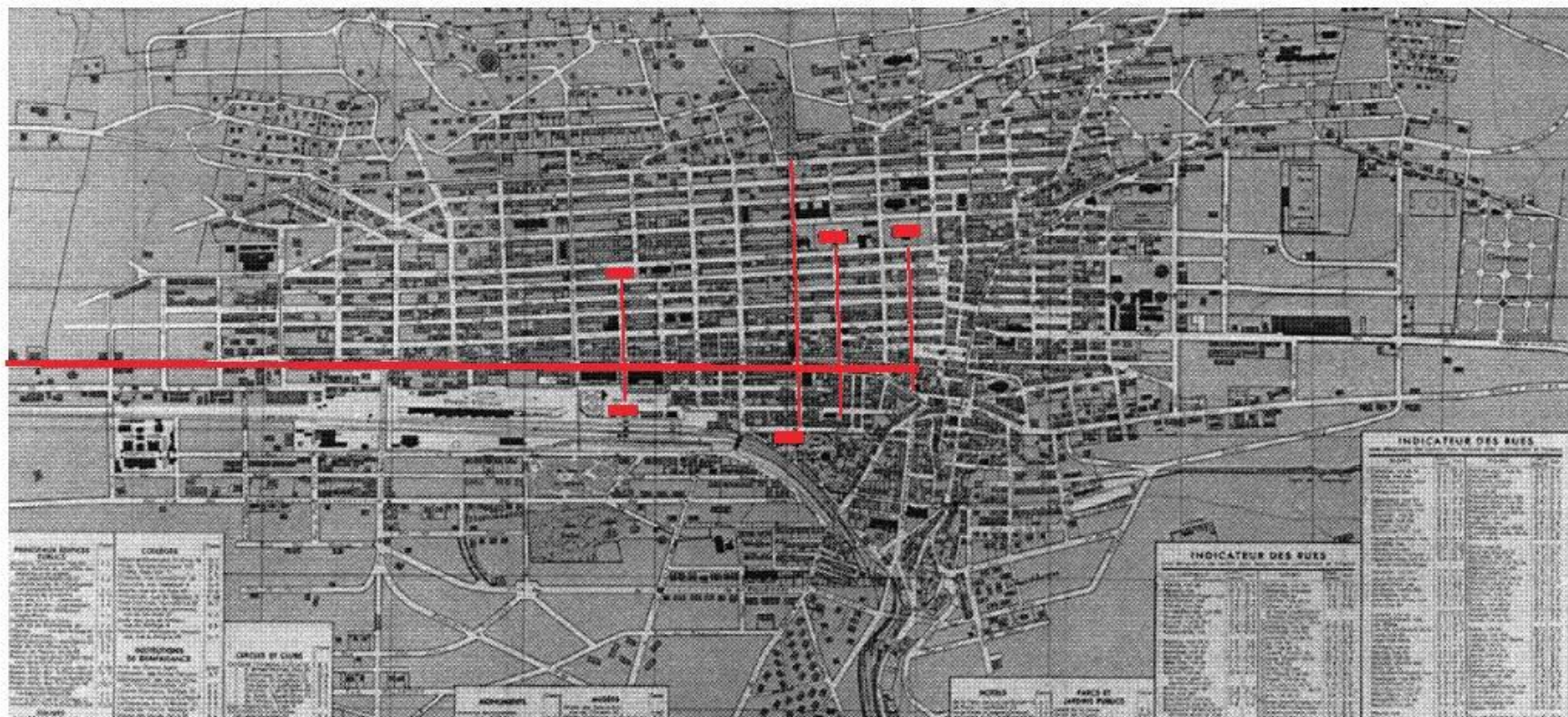


BIBLIOTHEQUE

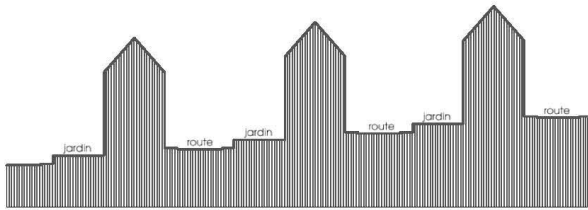
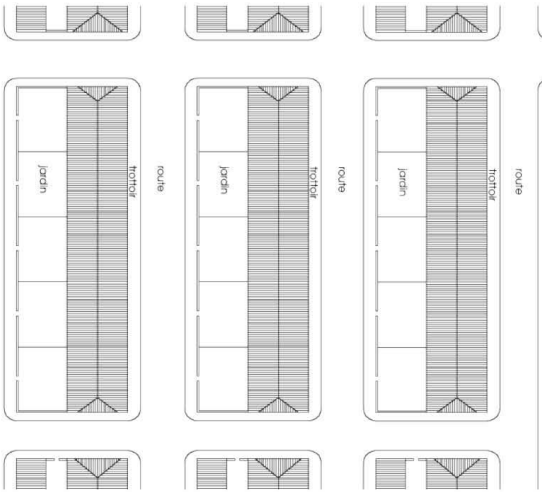
plan 0 de l'ensemble avec cabanes, plan et coupes de la cabane d'écrivain



CABANES



LA CHAUX-DE-FONDS



LA CHAUX-DE-FONDS



LA MAISON DE L'ÉCRITURE

FONDATION JAN MICHALSKI POUR L'ÉCRITURE ET LA LITTÉRATURE

CLUB 44, LE 17 OCTOBRE 2013